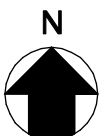


1 UNIT 1219-3A
 SCALE: 1/8" = 1'-0"

1215-25 W. GRANVILLE AVE. CONDOMINIUM
UNIT 1219-3A PLAN - FIELD SURVEYED

Ricchio & Ricchio Architects, Ltd.

CHICAGO, IL.



FLOOR PLAN
 APPROXIMATELY 795.39 NET SQUARE FEET

OCTOBER 3, 2006
 1215-25 W. GRANVILLE AVE.
 FILE NUMBER 1467
 SHEET ED-87